

Notes for use:

1. The lifetime of the batteries vary according as how often you use the product. Therefore you should often check the batteries by watching the indicator light in the receiver and the indicator sign on the LCD screen of the transmitter.
2. The valid distance of remote control means the straight-line distance between the transmitter and the receiver without obstacles in between. If there are interference signals or signal screening around, the actual remote control distance may vary.
3. This product is for pet training. Only by training, the pet can understand the intention of its owner. Good effect can only be achieved after a period of training.
4. Training sessions should be kept positive and short, about 10-15 minutes long each time.
5. Presently, this product is the most effective and safest tool for training pet. following the correct operational instructions, you can effectively train the pet and bring it no harm.

Petainer®

Multi-Dog Training System

Rechargeable and Waterproof Receiver Collar

Please read this entire guide before beginning



Operating Guide

Table of Contents

Compsents	3
Key Definition	5
Features	7
How the Petainer Multi-Dog Training System with Rechargeable and Waterproof Receiver Collar Works	7
Operating Guide	8
Prepare the Remote Transmitter	8
Prepare the Collar Receiver	9
Encode between Remote Transmitter and Collar Receiver	9
To Test Petainer Multi-Dog Training System with Rechargeable and Waterproof Receiver Collar	10
Fit the Collar Receiver	12
Re-Thread the Collar	14
Regular Maintenance	14
Frequently Asked Questions	15
Troubleshooting	17
Finde the Best Intensity Level for Your Pet	18
Common size of different dogs	19
Common weight of dogs	19

WARNING

Please charge before using the product!

If the transmitter and collar receiver don't work for a long time, you should take out the battery from the transmitter and charge the collar receiver fully before keeping it idle, and charging it every one month.

Components

IS-PET900-B 1 for 1



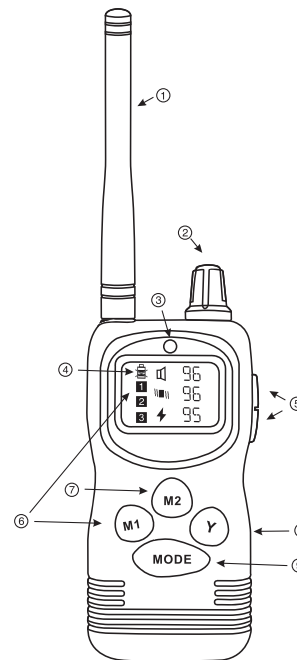
IS-PET900-B 1 for 2



IS-PET900-B 1 for 3



Key Definition



1. Antenna
 2. Knob switch
 3. Indication Light
 4. LCD Display
- 1-99 Level
 - Beep Mode
 - Vibration Mode
 - Static Shock Mode
- 1** Memory 1
 - 2** Memory 2
 - 3** Memory 3
- Low Battery Indicator
5. Up/down Button
 6. Memory Group
 7. Memory Set
 8. Launch Button
 9. Mode Button

1. Antenna: transmit the signal to Collar Receiver.

2. Knob switch: Select the different channel to encode among transmitter with other collars receiver.

3. LED Indicator: this light will flash when transmitter works, or when charging, this light will be on.

4. LCD Screen:

- Beep mode : under this mode, the receiver will beep except; level 0 press Up/down button, it can adjust beep sound level from 0 to 99.

- Vibration mode: under this mode, the receiver will vibrate except level 0; press Up/down button, it can adjust Vibration level from 0 to 99.
- Static Shock mode: under this mode, the receiver will shock except level 0; press Up/down button, it can adjust Static level from 0 to 99.
- 1, 2, 3 are the groups of memories which save the data of the level of sound, vibration and static shock of each group.

5. **Up/down button:** Intensity level button for Sound, Vibration and Static Shock modes.

6. **M 1 button:** press this button, you can select which group you want to save the level of each mode: beep, vibration and static shock. Each Channel has up to 3 group memories. M2 button to save the levels.

7. **M 2 button:** press this button to save the group level you just choose.

8. **Launch button:** after finishing mode selection, press this button to send the signal to the collar receiver.

9. **Mode button:** include 3 modes as Beep Sound, Vibration and Static Shock Mode.

Rubber Cover:

Seal charging hole to keep from dust

Charging hole:

Charge for Collar Receiver

On/ Off/Encode Button

turn on/off the Collar Receiver and hold it to enter encoding status

Contact Points:

Deliver the safe static correction



A When charging the battery, the red LED light shows up and changes to green LED after fully charged.

B When Standby, the Collar Receiver will flash green LED light every four seconds.

C After turning on the Collar Receiver, press and hold the On/Off/Encode button for 5 seconds to enter encoding period The green LED light will keep flashing for 10 seconds to indicate the encoding time.

D Special waterproof design for Antenna.

Features

1. Remote Transmitter and chargeable Receiver Collar

2. Waterproof Collar Receiver means your pet can swim in the water

3. Up to 1000 meters remote control distance

4. Free combination among three modes Beep Sound, Vibration and Static Shock

5. 99 levels of Beep Sound

6. 99 levels of Vibration

7. 99 levels of Static Shock (optional)

8. Power save:

- The collar receiver will go into deeply sleep if no operation for 5 minutes. And any movement will activate the receiver.
- The transmitter will go into STANDBY MODE if there is no operation after 2 minutes and go into deeply sleep after 5 minutes, press any button can activate the transmitter from Standby mode and press Mode button for 5 seconds to activate the transmitter from deep sleep mode.

9. This system can be expandable to 3 Collar Receivers.

10. Two pairs of metal prong (short/long) to suit dogs with varied fur thickness.

11. Collar Receiver Lithium battery: 3.7V 240 mAh Lip

How the **Pet Ainer** Multi-Dog Training System with Rechargeable and Waterproof Receiver Collar Works

Pet Ainer Multi-Dog Training System with Rechargeable and Waterproof Receiver Collar has been proven safe, comfortable, and effective for all pets over 25 pounds. This system assists you in controlling your pet without a leash in a range up to 1000m. At the push of a button, the Remote Transmitter sends a signal, activating the Collar Receiver. Using the Remote Trainer consistently and correctly, much misbehavior that you pet exhibits can be corrected or any basic obedience commands can be taught.

Important: This Training System has a range up to 1000m. Depending on the way you hold the Remote Transmitter, the range may vary. Hold the Remote Transmitter in a horizontal position away from your body to achieve optimum range. Terrain, weather, vegetation, transmission from other radio devices, and other factors will affect the range of your Remote Trainer.

Operating Guide

Step 1 Prepare the Remote Transmitter:

1 Battery installation

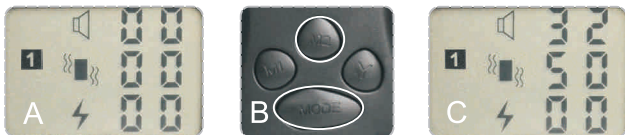
To install the battery, open the battery cover at the back of the transmitter.

Install the battery (1 X 6F22 9V) ensure the polarity is correct.

The transmitter will TURN ON automatically.

How to use the Remote Transmitter

1. To install the battery , open the battery cover at the back of the transmitter, it will on automatically.
2. Select the right channel to match the different dogs by Knob switch at the right upside. there are 3 channels to train up to 3 dogs.
3. Press M1 button to select the memory group(A).
4. Set to the different modes by pressing the Mode Button-The LCD images will change from(B).
5. Press Up/Down buttons on right side to set Beep Sound, Vibration and Static Shock level(C).
6. Press M2 button to save the setting to the memory and There are 3 memory groups for each channel (B).



7. Press Launch Y button to send the signal and train the dog.
8. The transmitter will go into STANDBY MODE if not operating for 2 minutes (the LCD screen is off) and will TURN OFF if not operating for 5 minutes.
9. In STANDBY MODE, press any button to wake it up. When turn off status, hold the Mode button for 5 seconds for TURN ON.



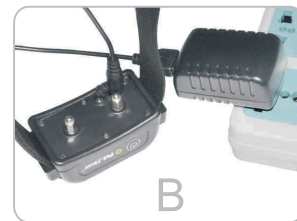
Notes: These three modes could be combined freely and work at same time, so please set those modes you don't want at the level "0".

Step 2 Prepare the Collar Receiver :

2 Charge the Collar Receiver

1. To TURN ON the Collar Receiver, press the on/off button, after a beep, the green LED will be on and flashing every 4 seconds and it is in working mode.
2. Open the rubber cover and Connect the charger connector to the charging hole.
3. Plug the charger into a standard outlet .
4. The red LED will be on (A).
5. Charge the Collar Receiver at least 6 hours for the first charge.
6. After fully charged, the red LED light will be turned to green LED light automatically (B).
7. Put back the rubber cover to keep charging hole clean.
8. If the battery is needed to recharge, the collar receiver will beep for 20 seconds.

NOTE: Please check whether the battery needs to recharge before you use it. When you turn the receiver on, if there are beeps for 20 seconds, you need to recharge it before using.



Step 3 Encode between Remote Transmitter and Collar Receiver :

1. To install the battery , open the battery cover at the back of the transmitter , it will on automatically.

2. Choose channel 1, 2 or 3.
3. Turn on the Collar Receiver by pressing on/off button , and a beep sound out
4. Then press the on/off button again and hold it for 5 seconds, the LED light will start to flash , and 2nd beep sound out.
5. When the light start to flash , press Y button of Remote Transmitter immediately.

NOTE: Encode has to be finished within 10 seconds after 1st beep from the Collar Receiver, that means you have to press "Y" button quickly or at least press it within 10 seconds.

6. While press "Y" button and the light stop flashing , which means Encode is successfully.
7. For 2nd and 3rd Collar Receiver Encode, repeat step 2 to 5, please be sure to choose different channel from 1st Collar Receiver .

Note: Factory's default set is to encode within 10 seconds after turning on Collar Receiver, so when you encode with 1st Collar Receiver, please don't put all Collars Receiver in the Encoding status at same time to avoiding encoding at the same channel.

Step 4 To Test **PetAimer®** Multi-Dog Training System with Rechargeable and Waterproof Receiver Collar :

The static impulse released by the Collar Receiver can not be seen with naked eye. You can test the Stimulation by this way:

Test Beep, Vibration and Static Shock function

Take out the test bulb from the package and wind its metal wire on the Collar's Receiver Probes.

Press M1 button to select the memory group to change (A).

Press Mode button of Remote Transmitter, switch to Beep Mode, confirm the level not to be 0, you can press UP/DOWN button on the right side to adjust (B).

Press Mode button of Remote Transmitter, switch to Vibrate mode, confirm the level not to be 0, you can press UP/DOWN button on the right side to adjust (C).

Press Mode button of Remote Transmitter, switch to Shock Mode, confirm the level not to be 0, you can press UP/DOWN button on the right side to adjust (D).

Press M2 button to set it into memory (D).

Press Y button, test bulb will flash, that means Shock function works (E) Collar Receiver will vibrate, that means Vibration Function works. And the Collar Receiver will beep, that means Beep Mode works.



Note:

- I: If LCD of Remote Transmitter does not display, there are probably two reasons:
1. Lightly Standby : In order to save power, the Remote Transmitter will go into Standby Mode if there is no operation after 2 minutes, press any button can activate Remoter Transmitter, LCD will display (A).
 2. Deeply Sleeping: In order to save power, the Remote Transmitter will go into Deeply Sleep Mode if there is no operation after 5 minutes, hold Mode button 5 seconds can activate the Remote Transmitter, LCD will display (B).
- II: The collar receiver will go into deeply sleep if no operation for 5 minutes. And any movement will activate the receiver.
- If Collar Receiver has no respond when you press Y button, and Indicator light of Collar Receiver is not on either, you can shake Collar Receiver or let dog move, Indication light of Collar Receiver will show green and means Collar Receiver is activated and will work.
- III: When testing you can choose any mode, please make sure intensity Level of each model can not be 0, you can press UP/DOWN to adjust.

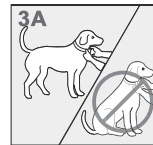


Step 5 Fit The Collar Receiver with your dogs:

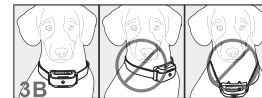
5 Important: the proper fitness and placement of your collar is important for effective training. The Probes must have direct contact with your pet's skin on the underside of his neck.

To assure a proper fit, please follow these steps:

1. Have your pet standing comfortably (3A).
2. Centre the Probes underneath your pet's neck, touching the skin (3B). If your pet has a long or thick coat, please use longer Probes, we enclosed 2 sets Probes, short ones and longer ones.



CAUTION 1 There are 99 levels for Vibration and Stimulation. The strong Stimulation can penetrate the hair of the pet within 6mm thick. Do not shave the pet's neck as this may increase the risk of skin irritation.



3. The Collar should fit snugly, yet loose enough to allow one finger to fit between the strap and your pet's neck(3C).



4. Allow your pet to wear the collar for several minutes then recheck the fit Check the fit again as your pet becomes more comfortable with the Collar. If your pet's neck is less than 13.4" around, you will need to thread the part of the collar which includes the antenna through the buckle. It will be a tight fit.

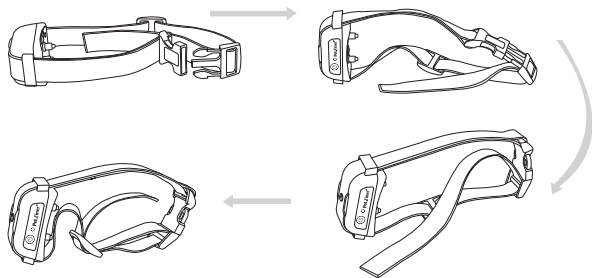
CAUTION 2 Risk of skin damage.

- For comfort, safely and effectiveness of this product. Please ensure that you check the fit of your pet's collar frequently. If any skin irritation is observed, discontinue the use of the collar for a few days. If the condition persists beyond 48 hours, see your veterinarian.
- Do not attach a leash to the Collar. This can result in pulling the Probes too tightly against your pets neck. You may put a separate nonmetallic collar on your dog's neck and attach a leash.
- Do use a harness of attaching a leash and/or tags while using the Collar.
- The Receiver Collar is not designed to be worn constantly. We recommend the Collar not be worn for more than 12 hours out of every 24-hour period.

- Most pets feel uncomfortable wearing the collar at first time. Don't use any functions before the pet is used to the collar.
- We suggest you give the dog Vibration before starting the Static Shock. After a time of training, the dog will learn that Stimulation will come after Vibration. In this way, the Vibration alone can effectively curb the improper deeds of the pet. The Stimulation only acts as a menace that might be unnecessary for most of the time.

Step **Re-Thread the Collar (as diagram)**

6



NOTES:

Our receiver collar has special design for Antenna, we don't recommend you release the collar from the receiver. If you do want, please make sure screw it back after installing the belt back to the collar.

Regular Maintenance

- Check Probes for tightness weekly.
- Clean Probes with alcohol weekly.
Note: turn off the collar receiver before touching the probes.
- Check your dog's neck for irritation and wash neck weekly.

Frequently Asked Questions

How old does my pet have to be before using **PetAiner** Multi-Dog Training System with Rechargeable and Waterproof Receiver Collar?

Your pet should be able to recognize basic obedience commands such as "Sit" or "Stay" **PetAiner** Multi-Dog Training System with Rechargeable and Waterproof Receiver Collar may be too large for pets under 25 pounds.

Once my pet is trained and has been obeying my commands, will have to continue to wear the Receiver Collar ?

Probably not. You may need to reinforce training with the Receive Collar from time to time.

Can I use **PetAiner** Multi-Dog Training System with Rechargeable and Waterproof Receiver Collar with more than one pet?

Yes, you can simply add one more collar receiver to the system.

Will I get exactly 1000 meters of range with the Remote Trainer?

The effective range of the Remote Trainer means the straight-line distance between Remote Transmitter and Collar Receiver without obstacles in between. Range may vary according to terrain, weather, vegetation, battery capability as well as transmission from other radio devices.

How long can I continuously deliver Sound,Vibration or Static Shock to my pet ?

The maximum amount of time you can deliver Sound, Vibration or Static Shock to your pet continuously is 10 seconds. After this, the Remote Transmitter will time-out, and the Sound, Vibration or/and Static Shock must be released and pressed again.

Is the Receiver Collar waterproof?

Yes, your pet can swim in the water.

What do I do if my pet's neck becomes red and irritated?

Discontinue use of the **PetAiner** Multi-Dog Training System with Rechargeable

and Waterproof Receiver Collar for a few days. If the condition persists beyond 48 hours, see your veterinarian. Once the skin returns to normal, monitor your pet's skin condition closely.


Can I place Receiver Collar on another collar?

NO. The collar used for this unit has a sleeve to hold the Antenna.

Can I attach a leash to the Receiver Collar ?

NO. This can result in pulling the Probes too tightly against your pet's neck. Use a separate collar placed above the Receiver Collar .

How will I know when to change or charge the batteries?

For Remote Transmitter: you need to change the battery, if the symbol  will show up on the right down side of LCD screen. For Collar Receiver: If you hear the beep for 20 seconds or when you turn on the Collar Receiver, it beeps for 20 seconds.

How long is your lithium battery lifetime?

Our Lithium battery can charge 400 times for Collar Receiver.

How long can I leave Receiver Collar on my dog?

The Collar is not designed to be worn constantly. We recommend the Collar not be worn for more than 12 hour out of every 24-hour period.

How long should I Process my training session for my pet?

Training sessions should be kept positive and short, it is better for about 10-15 minutes long each time.

What kind of dogs are your Multi-Dog Training System with Rechargeable and Waterproof Receiver Collar suitable for?


The collar is adjustable from length 13.4" (34cm) to 22" (56cm), if your pet's neck is smaller than 13.4" , you have to rethread it, if your pet's neck is larger than 22" , please don't buy it; and this Collar is not suitable for the dogs less than 25 pounds either.

Troubleshooting

My pet does not respond after correct installation Multi-Dog Training System with Rechargeable and Waterproof Receiver Collar does not work?

- You need to make sure the correct connection for the battery in the transmitter and charge Collar Receiver for 6 hours individually first.
- You need to turn on the Remote Transmitter By holding the Mode button for 5 seconds.
- Check the levels of Sound, Vibration or Static Shock.
- Restart the Collar Receiver by pressing the on/off button.
- Test 3 functions (Beep, Vibration and Shock) first before using. See part "Test" of Operation Guide.
- Intensity level has to be more than "0" .
- The Collar Receiver will go into deeply sleep if no operation for 5 minutes. And any movement will activate it.
- Make sure the Probes are placed snugly against your pet's skin.
- Trim your pet's fur where the Probes touch the neck and/or switch to the longer Probes.
- If all of above does not work, you can try reencode between Remote Transmitter and Collar Receiver. (See part "Encode" of Operation Guide)

Remote Transmitter does not work

- Check if the battery install correctly.
- Check if Remote Transmitter is on low battery status, the symbol  will show up on the left up side of LCD screen.
- You need to hold the Remote Transmitter for 5 seconds for turning on.
- Remote Transmitter will automatically goes into standby mode if no action is detected with 2 minutes. In this situation there will be no LCD display. Press any button to re-activate the Remote Transmitter.

- Remote Transmitter will automatically goes into deeply sleep status if no action is detected within 5 minutes. at this time there will be no LCD display. You have to press "Mode" button for 5 seconds until LCD display.

My Receiver Collar works great for some time, but it does not work anymore after I charged.

- First, check if charging is successful, when you are charging, red LED light will be on, after fully charged, the red led light will be turned to green LED light automaically.
- You have to turn on Receiver Collar again after you charged.

We turned on the receiver collar and it starts to beep for 20 seconds.

- Receiver Collar will beep for 20 seconds in Low battery status unless it gets charged, charge it for 6 hours and the other functions will work after charging finished.

I want to test Collar Receiver myself, but it does not work.

- If you test Collar Receiver by your hand or leg, please touch the 2 electrodes at the same time, only touch one electrodes will not work.

The Collar Receiver is in bad quality, it didn't work after knocking down

- Our Collar Receiver is designed to be not knock-down, please don't knock down it avoiding breaking structure and circuit.

Find the Best Intensity Level for Your Pet

General Tips

- Eliminate one misbehavior or teach one obedience command at a time. If you move too fast with the training, your pet may become confused.
- Be consistent. Give your pet a tone or stimulation with each misbehavior.
- Do not over-correct your pet. Use as few stimulations as possible to train your pet.
- Unless you can supervise him, it is recommend that you restrict your pet from situations in which he has a history of misbehaving. However, setting up a situation as a training session can dramatically improve your chances of success.
- If your pet reacts to the training by hiding or acting fearful, redirect his attention to a simple and appropriate behavior such as the "Sit" commend.

Common size of different dogs

Size	Neck (cm)	Chest Measurement (cm)	Back Length (cm)	Type
Medium	23-28	35-42	28	Maltese Dog, Shih Tzu
Large	27-31	41-47	31	Miniature Schnauzer, Pekingese
Large	30-34	46-53	35	Schnauzer, English Cocker Spaniel
Large	33-37	52-59	40	Beagle
Huge	43-48	76-84	60	Husky
	47-52	88-97	65	Labrador Retriever
	52-62	92-100	70	Golden Retriever, Old English Sheepdog

Common weight of dogs

Large Dog (Body height above 61cm, Weight above 40kg)

Medium Dog (Height 40.7-61cm, Weight 11-30kg)