

# Gog-spray training collars (rechargeable)

Advanced-reliable-safe-effective

User's manual



Welcome to purchase: mist sprayer (rechargeable), to ensure long-time and satisfactory performance of the smart mist sprayer, you shall read the user's manual carefully before it and keep it well.

(The products are suitable for dogs of all sizes)



# 1. Precautions



## Note

1. The products are suitable for dogs of all sizes.
2. It shall not be used on humans, which is prohibited by laws.
3. Please turn it off or take it off when you play with the dog.  
Please do not use it for a long time on a dog.



## Warning

1. Do not use it as a toy for children.
2. Do not put it near to a furnace or a place with a high temperature.
3. Do not use it, which may lead to open circuit of the Li battery, even a fire disaster.
4. The manufacturer will not be responsible for any direct or indirect loss for wrong operations.

# 2. Description



Spray nozzle: mist spraying nozzle

Mist injection nozzle: inject mist



Adjust switch: to adjust mist spraying amount

Recharging port: USB recharging cable port

Indicator light: to show work status

Power button: ON/OFF

### 3. Parts



Mist sprayer



USB charging cable



Citronella mist tank



User's manual

### 4. Accurate usage and wearing guide

Li battery power supply, with USB recharging cable, can be used for many times.



When the red light flashes once, the battery is short of power, and it shall be recharged.



The battery is fully charged when the green light is ON.

## Indicator light modes:

1. When the green light flashes continuously and it cannot start, it is short of power, and shall be recharged.
2. When the red light flashes once, the battery is short of power, it shall be recharged.
3. When the red light flashes twice, it is short of mist, more mist is needed.
4. When the red light flashes for 5 times, more mist is needed and battery shall be recharged.



## Start mode:

1. Push power button for 2 seconds, the green light will flash once, to start. (Red light flashes once in an interval of 5 seconds, it is in normal work status)
2. When it is fully charged, please turn on power, if the red light flashes twice and still cannot start (no gas in the gas tank of the fog sprayer), you shall turn off, refill, and then restart.



## Stop mode:

Push power button for 2 seconds, the green light will flash continuously, to stop it.

## Mist spray mode:

The mist spray mode is adjustable, as per the sizes of dogs (initial mode is “weak” mode).



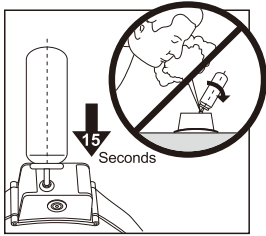
## Mist spray mode setting:

Push the button once, and it is in great mode when red light is on. Push again, and it is in weak mode when green light is on.



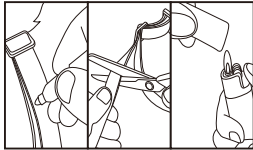
### Recharging mode:

Turn off power supply in recharging, and connect with hand phone recharger or desktop computer by UBS data cable for recharging.

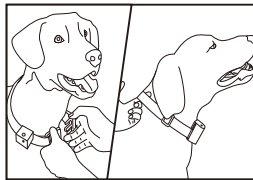


### Mist addition:

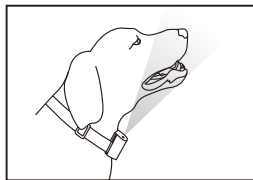
turn off first to add mist, then start. Note: drain off air in tank first (push the injection valve twice by a small screw driver), keep the tank vertical to the needle and fix, insert the needle into the tank and keep for 10 seconds, and then take off. Wearing guide:



Adjust neck belt as per dogs' sizes, cut off the extra part.



Wear correctly. Install the mist sprayer on the dog's neck, keep the nozzle vertical to the dog's nose and a finger shall be allowed between it and your dog's neck. Then you can know the barking frequency correctly. The installation is quite important, and it may work improperly if the mist sprayer is loosened.



The dog hair shall be trimmed for proper functions if the dog has long hair.

## 5. Functions and purposes

1. Low energy consumption, Li-battery can be recharged for many times in use, to reduce environmental pollution.
2. The mist spray mode is adjustable, as per the sizes of dogs (initial mode is “weak” mode).
3. The mist sprayer can stop dogs' barking, and the vibration frequency in barking will trigger the sensing reception system, and it will spray mist for warning in order to make the dogs stop barking. (no harm from the mist to humans and dogs, with Citronella fragrance, environment-friendly)
4. Citronella mist is made of Citronella essence oil, without CFC ingredient, environment-friendly, no harm to humans and dogs. (a bottle 85g, 3 OZ)
5. The mist sprayer can automatically distinguish dogs' barking, without interferences to outside sounds and frequencies.
6. The mist sprayer works shortly on a dog, and no long-time training is needed.
7. The mist sprayer is small, with a great mist capacity; it can spray for 20 times when it is full, which is 1.5 times of other brands.
8. When the mist sprayer is correctly installed on most dogs, it will spray mist to stop dogs' barking, and then the master shall encourage or praise the dogs. After a short period, the dogs will remember that.

## 6. Important notice

A few dogs are likely to become angry when it wears the sprayer, and it will be confused on how to react to the sprayer. Then the master shall gently guide, calm the dog, and guide it correctly. The dog will adapt itself quickly.

1. The product is suitable for dogs of all sizes, please use it for the purposes only described in the user's manual;
2. The dog skin may have problems if it is used on the dogs for a long time, to avoid that, please refer to the following methods:
3. Often check whether the dog has any problems on its neck or skin;
4. When you put it on your dog, please monitor your dog within one or two days;
5. Check and avoid too much pressure, and a finger shall be allowed between it and your dog's neck;
6. Wash the dog's neck and the mist sprayer's sensor every week.
7. Do not try to disassemble or fix it by yourself and warranty will become void if you do so;
8. If your dog resist severely or dangerously to it, when it cannot stop under guide, you shall stop using it immediately;
9. We suggest that you shall use it on a dog at age above 6 months and a weight above 8 pounds.
10. Within 24 hours, you shall not use it continuously for 12 hours.

## 7. Faults

It does not work	When the green flashes continuously and it cannot start, it is short of power, and shall be recharged.
	When the red light flashes once, the battery is short of power, it shall be recharged.
	When the red light flashes twice, it is short of mist, more mist is needed.
	When the red light flashes for 5 times, more mist is needed and battery shall be recharged.
	When it still cannot spray, please contact with the local distributor to solve.
No action to mist spray	Tighten it, and ensure that the sensing reception system adhere tightly to the dog's neck skin
	Check and ensure the spray nozzle aimed to the dog's nose
	Ensure that dog's fur will not affect spraying effect

## 8. Technical parameters

1. Electric recharger standard: general hand phone recharger, or recharging on desktop personal computer.
2. Li battery drives (DC3.7V)
3. Power supply: DC3.1V-4.2V
4. Idle current: 240uA
5. Spray current: 10-25mA